

**GENERAL NOTES FOR WALL SYSTEMS:**

1.1 ALUMINUM FACED COMPOSITE PANEL: 3/16" (4MM THICK) FR CORE.

SYSTEM — ALPOLIC PANELS CONSIST OF A CORE THERMOPLASTIC MATERIAL THERMALLY BONDED TO FACE SHEETS FABRICATED OF ALUMINUM 3105-H14 ALLOY 1/16" (0.5MM) THICK.

| PROFILE: A<br>ACM PANEL | THICKNESS<br>N/A. 4MM | FINISH<br>PRE-PTD | COLOUR<br>TBD |
|-------------------------|-----------------------|-------------------|---------------|
| PROFILE: B<br>ACM PANEL | THICKNESS<br>N/A. 4MM | FINISH<br>PRE-PTD | COLOUR<br>TBD |
| PROFILE: B<br>ACM PANEL | THICKNESS<br>N/A. 4MM | FINISH<br>PRE-PTD | COLOUR<br>TBD |

2.0 FLASHINGS:

| LOCATION | THICKNESS       | FINISH      | COLOUR        |
|----------|-----------------|-------------|---------------|
| EXTERIOR | 0.41MM (26 GA.) | WEATHER XL. | TO MATCH ADJ. |

3.0 SUBGIRTS: FABRICATED FROM Z275 STEEL MATERIAL CONFORMING TO ASTM A653M STRUCTURAL STEEL.

| THICKNESS:             | FINISH:          |
|------------------------|------------------|
| 1.22MM (18 GA.) U.N.O. | Z275 GALV. STEEL |

4.0 INSULATION: ROCKWOOL CAVITY ROCK. THERMAFIBER RAINBARRIER 45

5.0 AIR/VAPOUR BARRIER: BLUESKIN S.A. (SELF ADHERED MEMBRANE)

6.0 CAULKING:

| TYPE:   | APPLICATION: |
|---|--------------|
| 'TREMCO' DYMONIC, POLYURETHANE SEALANT (COLOUR TO MATCH ADJACENT SHEET) | EXPOSED      |

7.0 FASTENERS & APPLICATIONS:

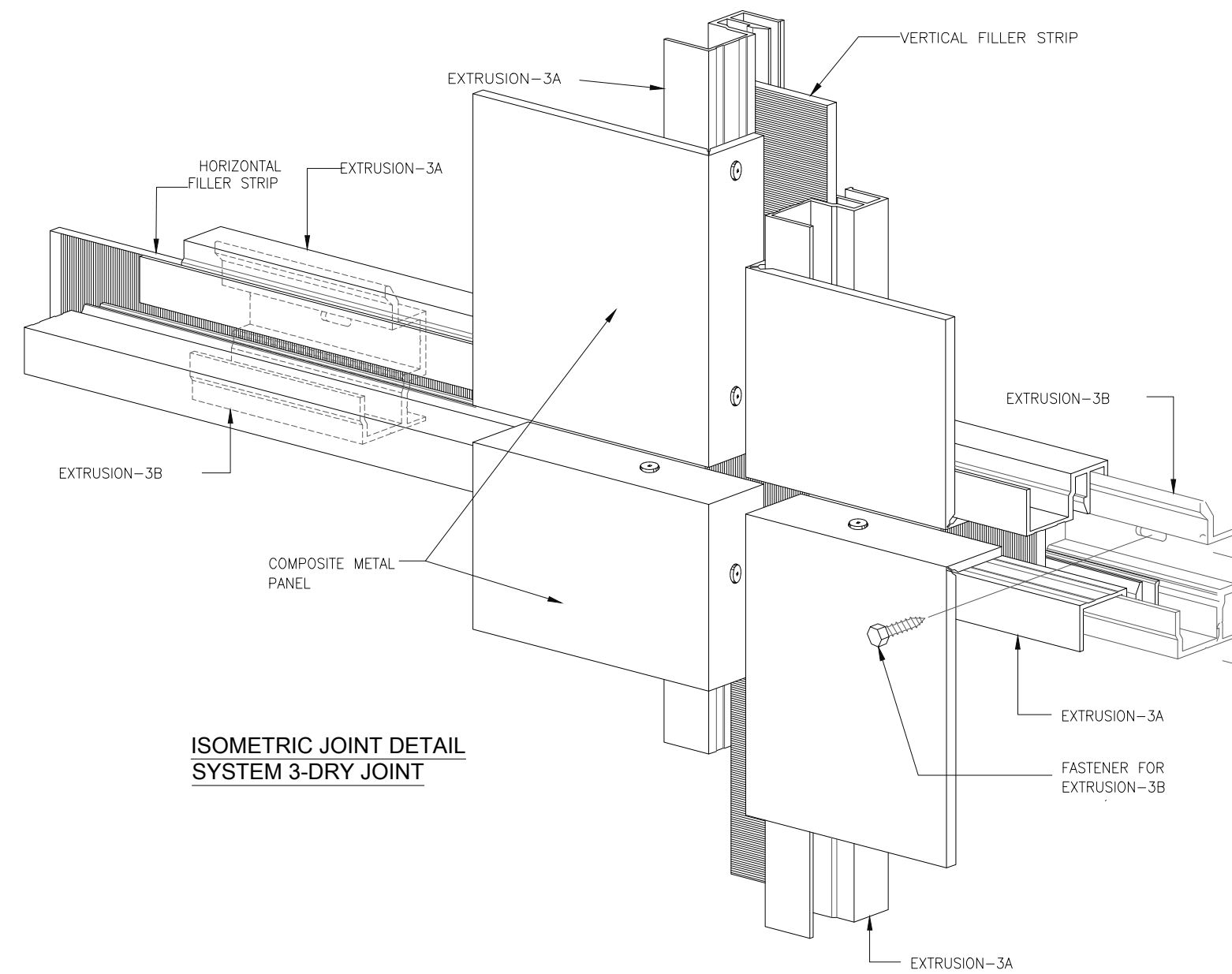
| TYPE   | APPLICATION  |
|--|--|
| #14SD X 4.5" WW GALV. LG. HEX HEAD, ZINC-PLATED SCREW.   | FASTEN KARRIER PANEL TO STRUCTURAL STEEL   |
| #10SD X 3/4" GALV.   | CLIP TO PANELS.  |
| #12SD X 3/4" GALV.   | SUBGIRT TO SUBGIRT   |
| #12 #3 ROB. HEAD TAP CON.  | IMP TO BLOCK @ PERIMETER OF OPENINGS   |
| #12SDX1.5" WW GALV.  | PANEL CLIPS TO SUBGIRTS  |
| 5MM DIA. - 120 DEG. COUNTERSUNK ALUM. RIVETS C/W STAINLESS STEEL MANDREL @ 16" CTRS. MAX (IN SHOP) | 5MM DIA. - 120 DEG. COUNTERSUNK ALUM. RIVETS C/W STAINLESS STEEL MANDREL @ 16" CTRS. MAX (IN SHOP) |

8.0 TOUCH-UP: REMOVE BURRS AND FILINGS FROM FIELD CUT SHEETS. TOUCH-UP MARRED AREAS WITH AIR DRY PAINT.

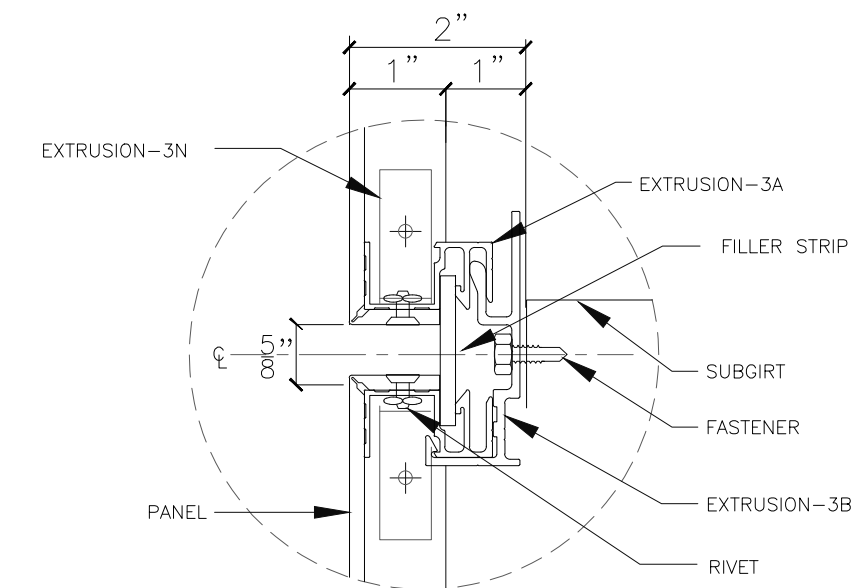
9.0 INSTALLATION NOTES:

- EXERCISE CARE IN UNLOADING, STORING AND ERECTING WALL SYSTEM TO PREVENT BENDING, WARPING, AND SURFACE DAMAGE.
- STACK MATERIALS ON PLATFORMS OR PALLETS, COVERED WITH TARPULINS OR OTHER SUITABLE WEATHER TIGHT AND VENTILATED COVERING, MAINTAINING MATERIALS IN A DRY CONDITION.
- THE FACE OF ALL SUPPORTING STEEL ON THE SIDING LINE MUST BE FREE OF ALL BOLT AND RIVET HEADS, BUILT-UP WELDS OR ANY OTHER OBSTRUCTION WHICH MAY INTERFERE WITH LINER INSULATION. GIRTS MUST EXTEND, WHERE POSSIBLE, FROM GIRT LINE TO GIRT LINE AND BE CONTINUOUS ACROSS THE FACE OF ALL COLUMNS.
- LINE UP EXTERIOR SHEETS AS SHOWN ON ELEVATIONS AND SECTIONS, DESIGNATED THUS: 12 x 4575, AND FASTEN TO THE SUBGIRTS AS NOTED ON THE TYPICAL CROSS-SECTION.
- INSTALL FLASHINGS AS LOCATED ON ELEVATIONS AND SECTIONS. CAULK SIDELAPS WHERE NECESSARY AND ALL ENCAPS WITH 'TREMCO'440 BUTYL TAPE (3mm THK. x 13 mm WIDE

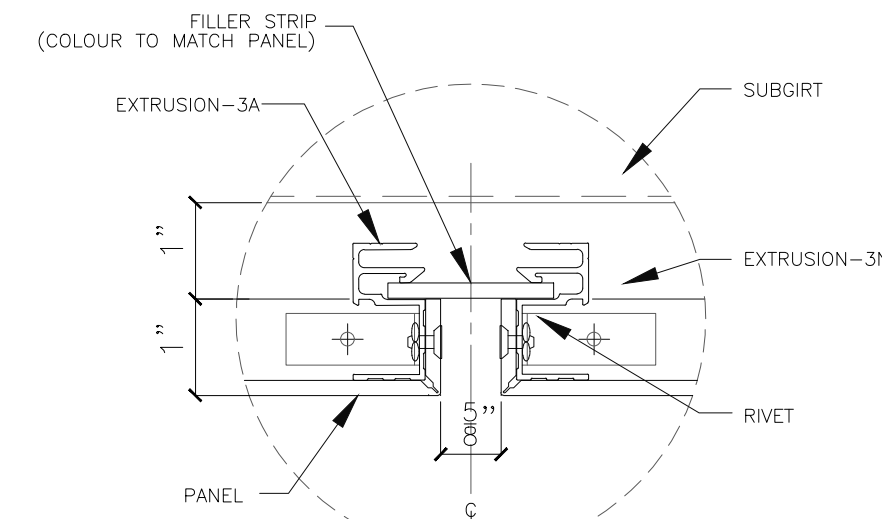
**ALUMINUM COMPOSITE PANEL:**



**ISOMETRIC JOINT DETAIL SYSTEM 3-DRY JOINT**

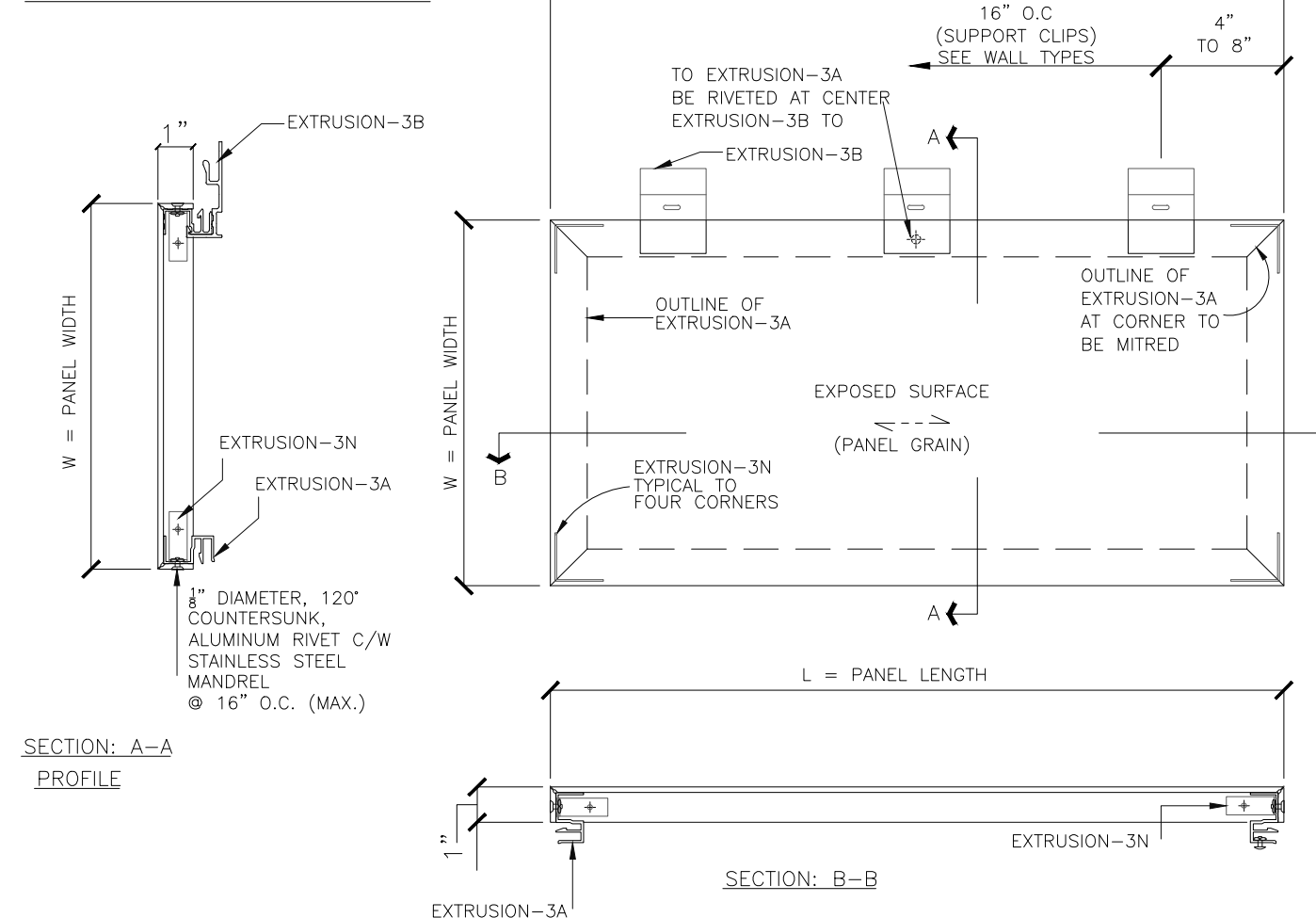


**1. HORIZONTAL JOINT DETAIL**



**2. VERTICAL JOINT DETAIL**

**ALUMINUM COMPOSITE PANEL:**



**DRAWING LIST:**

- G1 GENERAL NOTES
- G2 GENERAL NOTES
- P1 KEYPLAN
- E1 ELEVATIONS
- E2 ELEVATIONS
- E3 ELEVATIONS
- E4 ELEVATIONS
- E5 ELEVATIONS
- E6 ELEVATIONS
- E7 ELEVATIONS
- E8 ELEVATIONS
- E9 ELEVATIONS
- D1 DETAILS
- D2 DETAILS
- D3 DETAILS
- D4 DETAILS
- D5 DETAILS

PROJECT NAME:

DATE:

SCALE: NTS

DRAWN BY: MG YM

DRAWING TITLE:

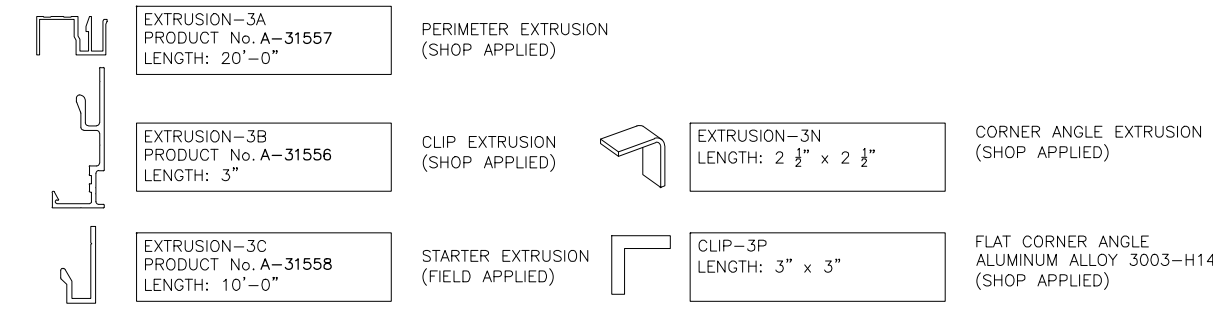
**GENERAL NOTES**

SHEET No.

**G1**

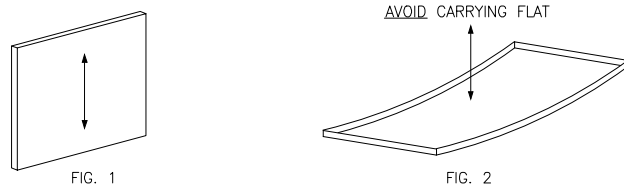
**GENERAL NOTES FOR ALUMINUM COMPOSITE METAL PANEL-DRY JOINT**

- 1.0 ALUMINUM FACED COMPOSITE PANEL: (4mm THICK)
- 1.1 COMPOSITION AND MATERIALS: ALPOLIC PANELS CONSIST OF A CORE THERMOPLASTIC MATERIAL THERMALLY BONDED TO FACE SHEETS FABRICATED OF ALUMINUM 3105-H14 ALLOY 1/64" (0.5mm) THICK. TYPE: ALPOLIC STANDARD FR CORE PANEL COLOUR: STANDARD COLOUR RANGE SEE BELOW FINISH: LUMIFLON
- 1.2 SHAPES AND FABRICATIONS: PANELS SHALL BE SHEARED TO SIZE AND FLANGES FORMED BY ROUTING THE BACK FACE, FOLLOWED BY BENDING; FLANGES ARE FRAMED WITH PERIMETER EXTRUSIONS. PANEL CORNERS ARE INTERNALLY BRACED WITH A PANEL CORNER BRACE.
- 1.3 ORIENTATION: COMPOSITE PANELS ARE CLEARLY MARKED WITH THE GRAIN DIRECTION (IF REQUIRED). INSTALL PANELS AS SHOWN ON ELEVATIONS AND SOFFIT PLANS.
- 1.4 WEAPAGE: 1/8" (6mm) DIAMETER WEEP HOLES SHALL BE PUNCHED IN THE BOTTOM FLANGE OF WALL PANELS AT QUARTER POINTS AND IN PERIMETER SOFFIT PANELS (IF REQUIRED).
- 2.0 EXTRUSIONS: FABRICATED FROM ALUMINUM ALLOY 6063 TEMPER T6

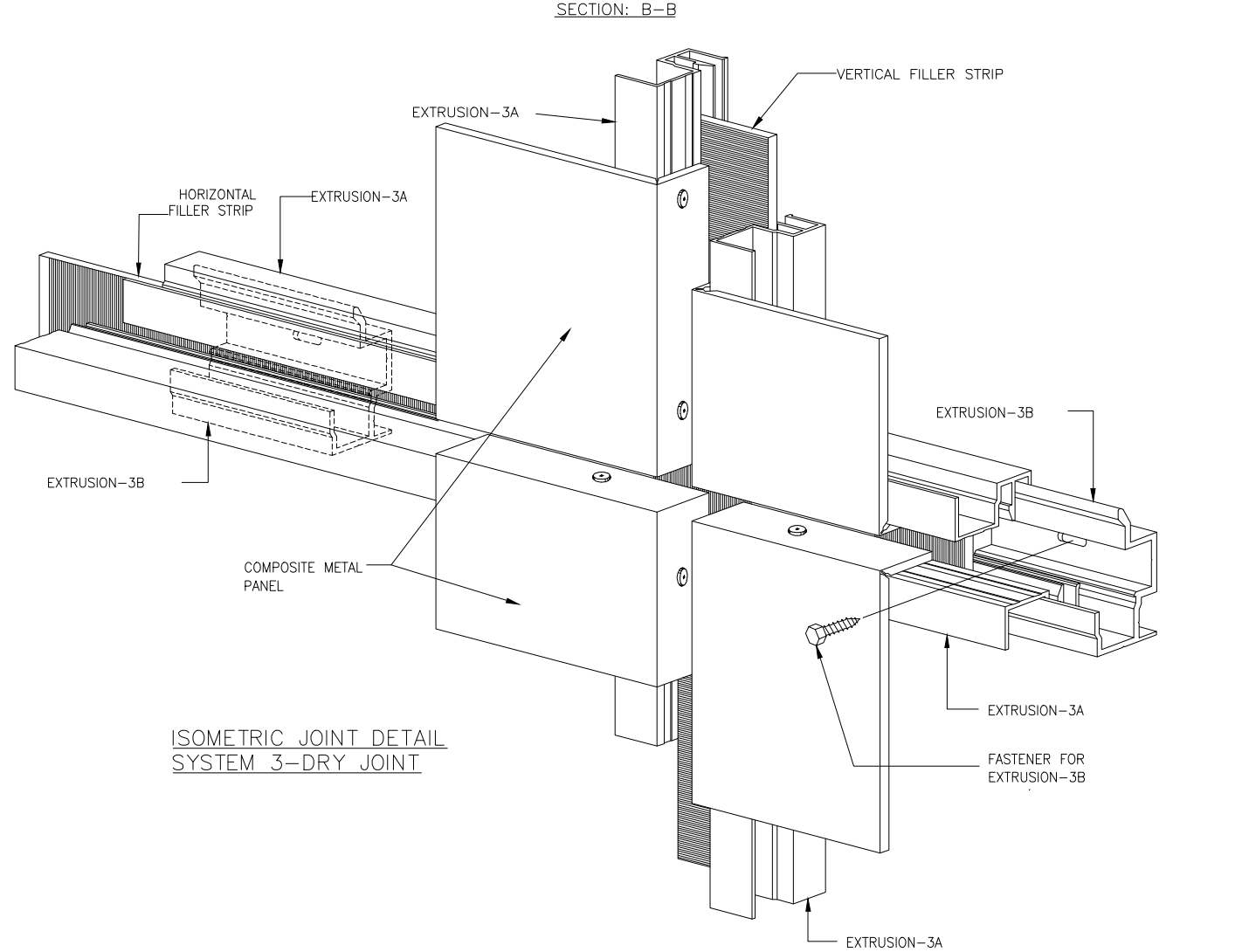
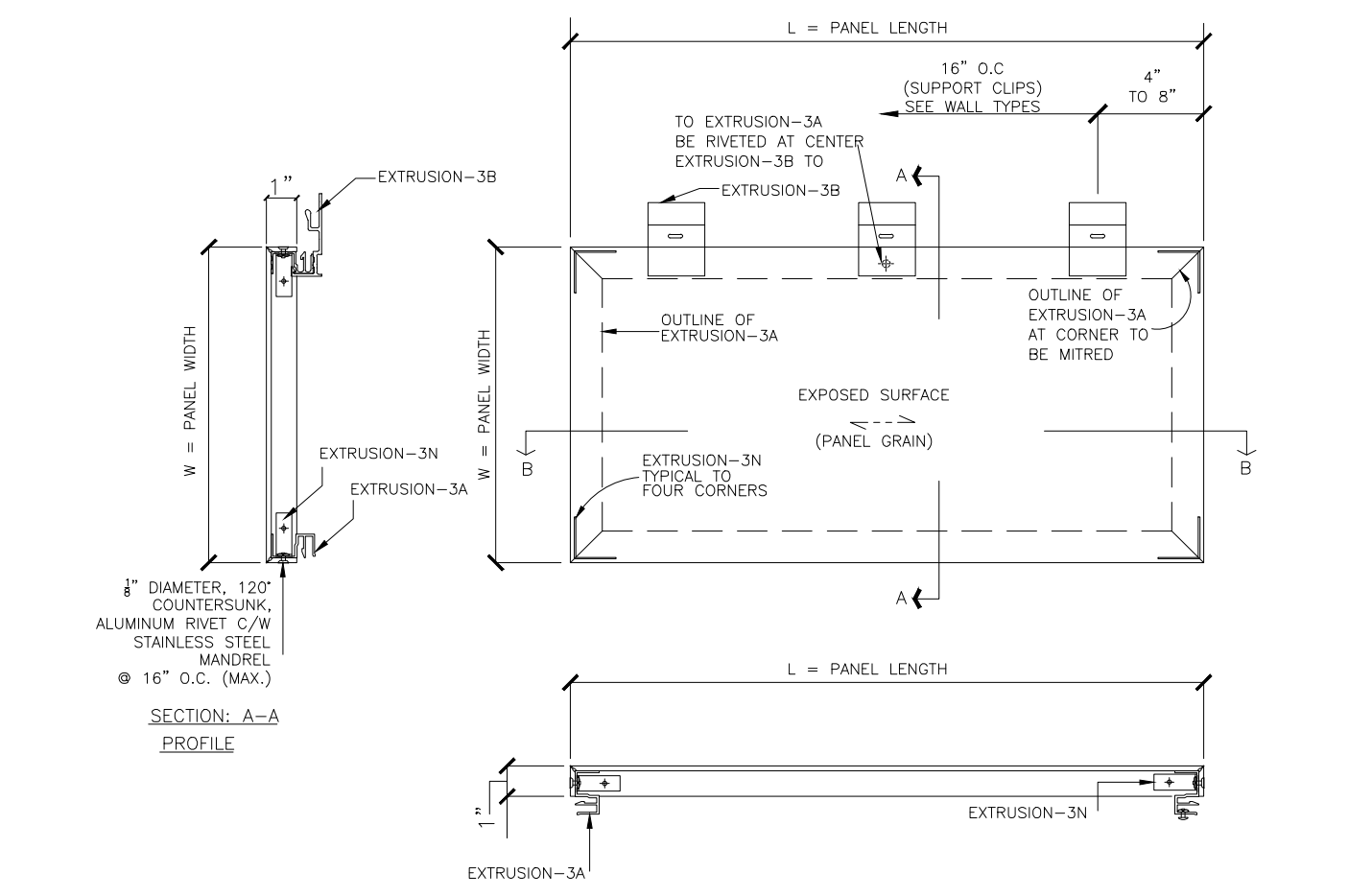
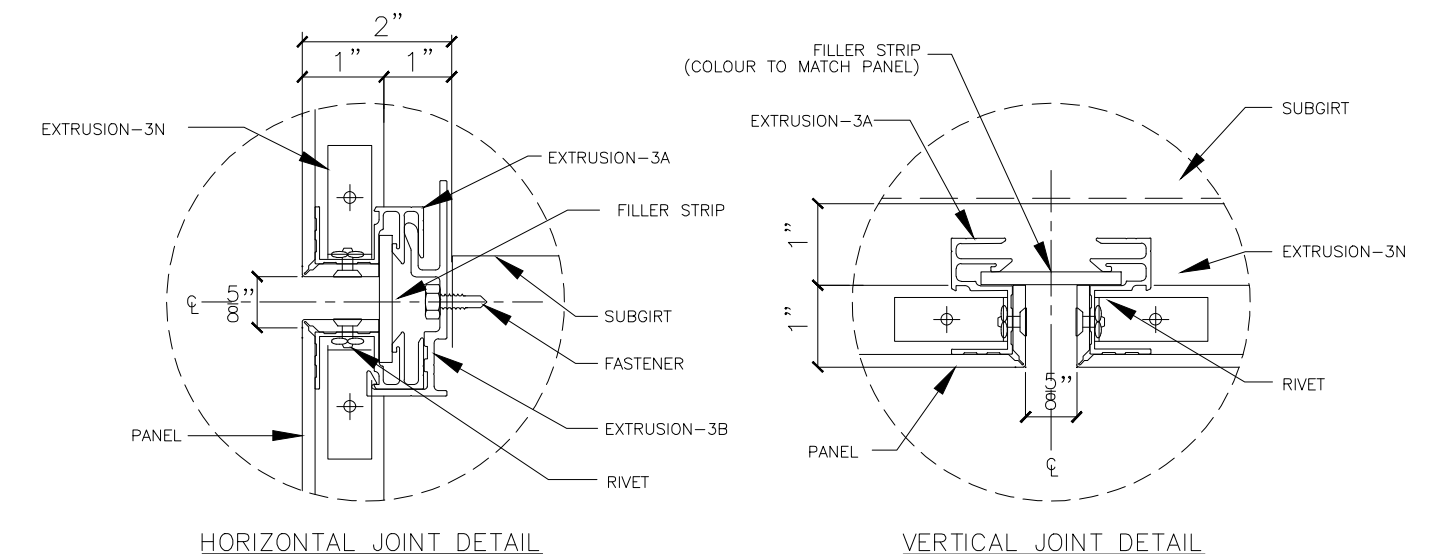


- 3.0 FILLER STRIPS:
- 3.1 HORIZONTAL AND VERTICAL FILLER STRIPS ARE TO BE SAME MATERIAL AS PANEL. FILLER STRIP WIDTHS ARE DETERMINED BY ADDING 1" TO THE JOINT SIZE. FILLER STRIPS ARE TO RUN THROUGH HORIZONTALLY THE JOINT, WITH VERTICAL FILLER STRIPS CUT TO FIT BETWEEN.
- 4.0 FLASHINGS:
- | LOCATION | THICKNESS | FINISH               | COLOUR                 |
|----------|-----------|----------------------|------------------------|
| EXTERIOR | 0.040"    | PRE-PAINTED ALUMINUM | BRIGHT COPPER METALLIC |
- 5.0 SUBGIRTS:
- | THICKNESS              | FINISH                | MIN. GRADE |
|------------------------|-----------------------|------------|
| 0.048" (18 GA.) U.N.O. | Z275 GALVANIZED STEEL | 230 MPa    |
- 6.0 INSULATION: (N/A)
- 7.0 AIR/VAPOUR BARRIER MEMBRANE:
- 8.0 CAULKING: (NOT REQUIRED)
- 9.0 FASTENERS & APPLICATIONS:
- | TYPE | APPLICATION  |
|------|--|
|      | #14B x 1-1/2" HEX HEAD, SELF-DRILLING #3 PT. C/W NEONBONDED WASHERS ZINC-PLATED SCREW.                       |
|      | SFS #14x3/4" LG. HEX HEAD, SELF-DRILLING NO. 2PT ZINC-PLATED STEEL SCREW @ 16" CTRS. 1/CLIP @ EVERY SUBGIRT. |
|      | SFS #10-12 x 1 1/4" LG. PANCAKE HEAD, SELF-DRILLING NO. 3PT. ZINC-PLATED SCREW 2/2 QUADREX DRIVE @ 12" CTRS. |
|      | 5mm DIA. - 120 DEG. COUNTERSUNK ALUMINUM RIVETS C/W STAINLESS STEEL MANDREL @ 16" CTRS. MAX. (N-SHOP)        |

- 10.0 UNLOADING:
- 10.1 EXERCISE CARE IN UNLOADING, STORING AND ERECTING WALL SYSTEM TO PREVENT BENDING, WARPING, TWISTING, AND SURFACE DAMAGE.
- 10.2 THE PANELS ARE QUALITY FINISHED ARCHITECTURAL PRODUCTS AND MUST BE HANDLED WITH CARE TO PREVENT DAMAGE TO THE INDIVIDUAL COMPONENTS.
- 10.3 UNLOADING WILL REQUIRE THE USE OF MECHANICAL LIFT OR HOIST EQUIPMENT DUE TO THE WEIGHT AND SIZE OF CRATES. WHENEVER POSSIBLE, THE USE OF NYLON BAND SLINGS AROUND THE ENTIRE CRATE IS PREFERRED. BALANCE LOAD SO THAT MATERIAL WILL NOT SLIDE.
- 11.0 SITE STORAGE:
- 11.1 LOCATE MATERIAL AT CONVENIENT LOCATIONS AROUND THE PERIMETER OF THE BUILDING, TO MINIMIZE HANDLING DURING INSTALLATION.
- 11.2 STORAGE SHOULD BE REASONABLY LEVEL. IF TERRAIN IS NOT LEVEL, USE WOOD BLOCKING TO MAKE CRATES LEVEL.
- 11.3 THE STRUCTURAL STRENGTH OF THE CRATE DEPENDS ON ITS RECTANGULAR SHAPE, WHEN CRATES HAVE BEEN OPENED, DO NOT STACK MATERIAL FLAT ON TOP OF EACH OTHER. KEEP PANELS IN UPRIGHT POSITION ON EDGE.
- 12.0 MATERIAL HANDLING:
- 12.1 CARRY PANELS AND FLASHINGS ON EDGE IN A VERTICAL POSITION FOR STIFFNESS. SEE FIG. 1.
- 12.2 CARRYING PANELS IN A FLAT HORIZONTAL POSITION CAN CAUSE DEFORMATION. SEE FIG. 2.



- 13.0 PANEL INSTALLATION & TOLERANCES:
- 13.1 PRIOR TO INSTALLATION, INSPECT STRUCTURE TO ENSURE ALL WALLS AND OPENINGS ARE WITHIN 1/8" OF LOCATION SHOWN ON INSTALLATION DRAWINGS. ALSO, STRUCTURE IS PLUMB WITHIN 1:1000 OF OVERALL HEIGHT. INSTALLATION IS NOT TO PROCEED UNTIL THE BUILDING IS WITHIN THESE TOLERANCES.
- 13.2 ALL SUPPORTS UTILIZED FOR THE PANEL SYSTEM IS TO BE STRUCTURALLY ADEQUATE AND APPROPRIATELY ATTACHED TO SUPPORT AND TRANSMIT LOADS APPLIED BY PANEL SYSTEM COMPONENTS.
- 13.3 ANCHOR PANELS SECURELY IN PLACE, IN ACCORDANCE WITH APPROVED SHOP DRAWINGS.
- 13.4 MAXIMUM DEVIATION FROM HORIZONTAL AND VERTICAL ALIGNMENT OF INSTALLED PANELS IS TO BE 1/4" IN 240" NON-CUMULATIVE.
- 13.5 BETWEEN DISSIMILAR MATERIALS, USE DUCT TAPE AS A SEPARATOR.
- 13.6 TO ADHERE PANEL STIFFENERS, USE 3M # 4949 VHB STRUCTURAL TAPE.
- 13.7 TO MAKE ADJUSTMENTS AT TIME OF INSTALLATION, USE PLASTIC HORSESHOE SHIMS (1.5mm, 3mm AND 6mm THICKNESS).
- 14.0 TOUCH-UP:
- REMOVE BURRS AND FILINGS FROM FIELD CUT PANELS.  
TOUCH-UP MARRED AREAS WITH AIR DRY PAINT.
- 15.0 CLEANING:
- 15.1 REMOVE PROTECTIVE FILM MATERIAL FROM PREFINISHED PANELS.
- 15.2 WASH DOWN SURFACES WITH A SOLUTION OF MILD DETERGENT IN WARM WATER, APPLIED WITH SOFT, CLEAN WIPING CLOTHES AND THEN FOLLOWED BY A CLEAR WATER RINSE.
- 15.3 REMOVE EXCESS SEALANT, OIL, TAR, AND SIMILAR SUBSTANCES BY MODERATE USE OF MINERAL SPIRITS OR OTHER ACCEPTABLE SOLVENT.



**CLADDING CONTRACTOR:**

CENTURY EXTERIORS  
105 MOFFAT ST., WOODSTOCK, NB  
E7M 2H5  
TEL: 506 324-9890  
FAX: 506 325-6536

DARTMOUTH OFFICE:  
50 EILEEN STUBS AVE. UNIT 130  
DARTMOUTH, NS

**ARCHITECT:**

COMEAU/MACKENZIE ARCHITECTURE  
/CONSULTANT  
SPITFIRE DESIGN CO. /DESIGNER

**JOB:**

**STAMP:**

**SCALE:**

**DATE:**

**DRAWN:**  
VCR DRAFTING

**CHECKED:**  
JM

**TITLE:**  
ACM PANEL GENERAL NOTES

| REVISIONS: |      |         |
|------------|------|---------|
| NO.        | REV. | DATE    |
| 1          | REV. | FEB. 17 |
|            |      |         |
|            |      |         |
|            |      |         |
|            |      |         |
|            |      |         |
|            |      |         |
|            |      |         |
|            |      |         |
|            |      |         |

**SHEET:**  
G1